



Built-in Meter



Automated Scheduling



24/7 Remote Control



Overcurrent Protection



Budget Management

SP-2101W

Smart Plug Switch with Power Meter Intelligent Home Energy Management

The Edimax Smart Plug Switch with Power Meter connects people to their homes, and the things they use every day. Designed to make homes more dynamic, functional and work better for modern lifestyles, Smart Plug products give users intelligent control over all of their home electronics. The Smart Plug Switch Power Meter plugs into any wall socket and enables you to switch or schedule a connected electronic device on/off from your smartphone, and the embedded power meter allows you to monitor and manage power usage. Power can be set to automatically switch off when a user-defined usage limit is reached, and the Power Meter can also send notification emails about alarm events. Just plug an appliance into the Smart Plug Power Meter and see how Smart Plug products can work for you and your home.

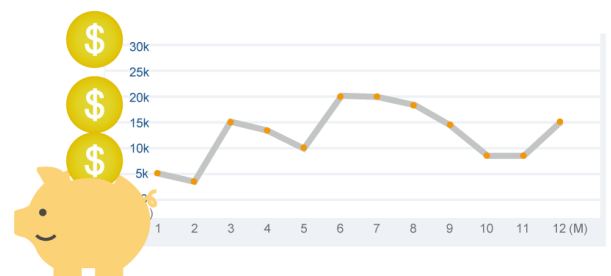
Monitor & Manage Your Power

Our Smart Plug with Power Meter is a new generation of smart plug for your home. Use your smartphone or tablet to switch things on or off from anywhere, and monitor the status and power usage of your appliances. Get valuable data about power usage around your home with daily, weekly and monthly stats available to help you identify where you can save energy, presented via easy-to-understand visuals in our free smartphone & tablet home-management app, which you can use to monitor, control and schedule all of the devices connected to Edimax Smart Plugs around your home.



Instant Savings With Auto Budget

Start saving money right out of the box with our built-in budget feature. Set a daily, weekly or monthly power limit for your appliance and the Smart Plug will automatically switch off and give you an email alert when you hit the limit. You can set the limit as well as view your history, in kWh or in real currency (\$) for a genuine, easy insight into how much you spend on each appliance and when it should be switched off. And a Smart Plug with Power Meter stores your history for up to twelve months, so you can analyze and find out exactly what's draining your budget. You'll probably be surprised by how much you can save..



Smart Plug Switch with Power Meter Intelligent Home Energy Management

SP-2101W

Helpful, Safe and Efficient

Build an intelligent, energy-efficient home with Smart Plugs, which are designed to make homes work better for modern lifestyles. A Smart Plug with Power Meter will keep you updated with helpful email alarm notifications and budget alerts, and can provide daily, weekly or monthly power usage reports. And it offers peace of mind that your home is safe - you can check the status of appliances remotely when you're out so you'll never have to worry about leaving something switched on again. Save money, lead an energy-efficient life and stay connected to the things you every day.



Easy Setup & Smart Notifications

Setup couldn't be any easier and is all done on your smartphone or tablet. Once the Smart Plug is up and running, email notifications can keep you updated about alarm events and which appliances and electronics are switched on/off via the EdiPlug app. Receive power usage reports and notifications that usage is over your budget. Make sure your intelligent home is working properly and keep track of what's going on in a busy, family home.



SOFTWARE FEATURES

- Switch on & off via iPhone, iPad & Android
- Monitor & manage your power
- Automated power usage reports & email alerts
- Automatic budget control feature
- Real time power data and history with daily, weekly & monthly stats
- Wireless installation with a smartphone or tablet
- No additional hardware required

ADVANTAGES

- **Save:** Save time and power
- **Safe:** Manage your home electronics anywhere/anytime
- **Smart:** Control your appliances from your smartphone or tablet

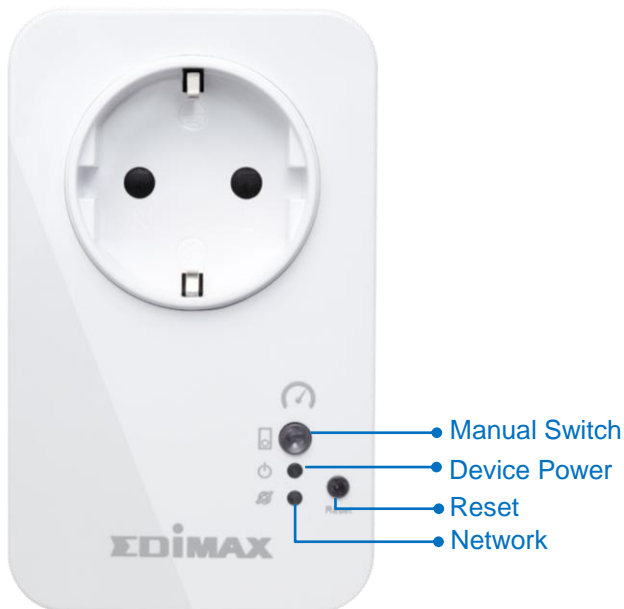


Smart Plug Switch with Power Meter

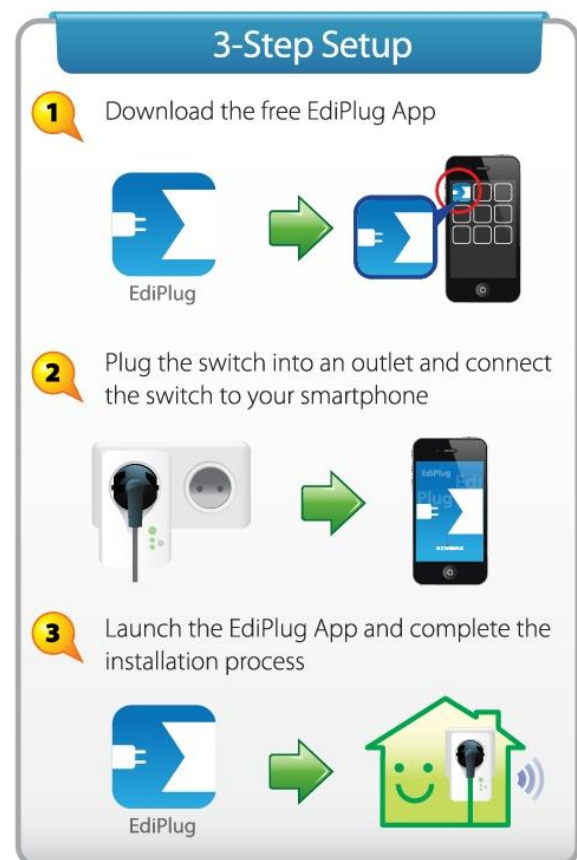
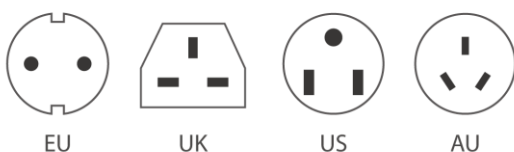
Intelligent Home Energy Management

SP-2101W
TECHNICAL SPECIFICATIONS

Electrical	Communication	Wireless Standards and Data Rates
<ul style="list-style-type: none"> Operating Voltage: 100–240VAC Power Frequency: 50–60Hz Max. Load Capacity: EU: 16A/230VAC; UK: 13A/240VAC AU: 10A/240VAC; US: 15A/120VAC 	<ul style="list-style-type: none"> Wireless IEEE 802.11b/g/n Coverage: Up to 10M Frequency Band: 2.4000 –2.4835GHz Wi-Fi Security: WEP, WPA/WPA2, WPS Protocol: Client UDP, TCP/IP, HTTP 	<ul style="list-style-type: none"> 11n: Up to 150Mbps(dynamic) 11g: Up to 54Mbps(dynamic) 11b: Up to 11Mbps(dynamic)
Management	Power Meter	Interface
<ul style="list-style-type: none"> Firmware upgradable iPhone & iPad App Android App Remote access (Internet) Email notifications Schedule control Budget control 	<ul style="list-style-type: none"> Power information: Current , KW, KWH Accuracy: ±3% (PF 1.0) Data refresh: Every 5 seconds 	<ul style="list-style-type: none"> LED Indicator: Power, Switch, Network Buttons: Reset, Switch
Environment	Dimensions & Weight	Certification
<ul style="list-style-type: none"> 32°F–104°F (0°C–40°C) 5–80%RH (non-condensing) Indoor use only 	<ul style="list-style-type: none"> 105mm (L) x 64mm (W) x 60mm (H) EU Plug type: 170 g UK Plug type: 175 g US Plug type: 150 g 	<ul style="list-style-type: none"> CE, FCC, LVD

HARDWARE INTERFACE


AC Plug:



Maximum performance, actual data rates, and coverage will vary depending on network conditions and environmental factors. Product specifications and design are subject to change without notice.
Copyright © 2014 Edimax Technology Co. Ltd. All rights reserved. www.edimax.com